

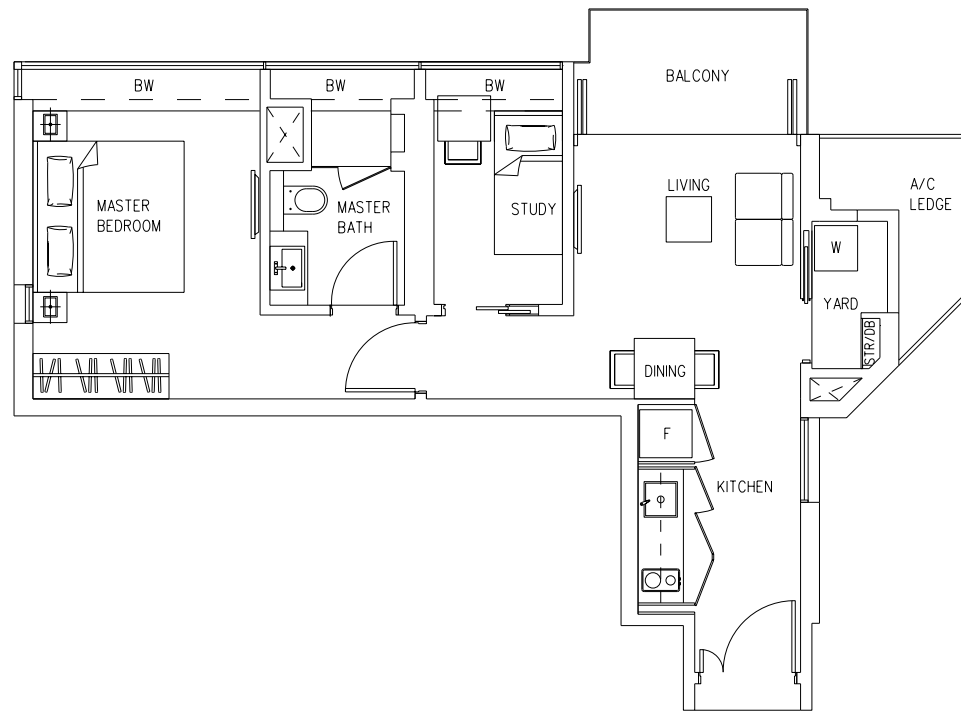
Schematic Diagram

368 Thomson Road Singapore 298127

Level					
36	PHB (#35-01)				PHA (#35-05)
35					
34	B2	B1	C	A	D
33	B2	B1	C	A	D
32	B2	B1	C	A	D
31	B2	B1	C	A	D
30	B2	B1	C	A	D
29	B2	B1	C	A	D
28	B2	B1	C	A	D
27	B2	B1	C	A	D
26	B2	B1	C	A	D
25	B2	B1	C	A	D
24	B2	B1	C	A	D
23	B2	B1	C	A	D
22	B2	B1	C	A	D
21	B2	B1	C	A	D
20	B2	B1	C	A	D
19	B2	B1	C	A	D
18	B2	B1	C	A	D
17	B2	B1	C	A	D
16	B2	B1	C	A	D
15	B2	B1	C	A	D
14	B2	B1	C	A	D
13	B2	B1	C	A	D
12	B2	B1	C	A	D
11	B2	B1	C	A	D
10	B2	B1	C	A	D
9	B2	B1	C	A	D
8	B2	B1	C	A	D
7	B2	B1	C	A	D
6	B2	B1	C	A	D
5	B2	B1	C	A	D
4	B2	B1	C	A	D
3	Sky Terrace Level				
2	Carpark				
1	Ground Level/ Carpark				
B1	Carpark				
	01	02	03	04	05

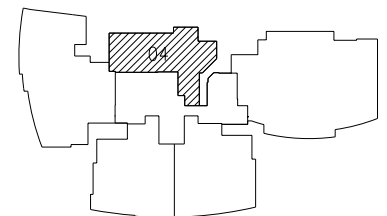


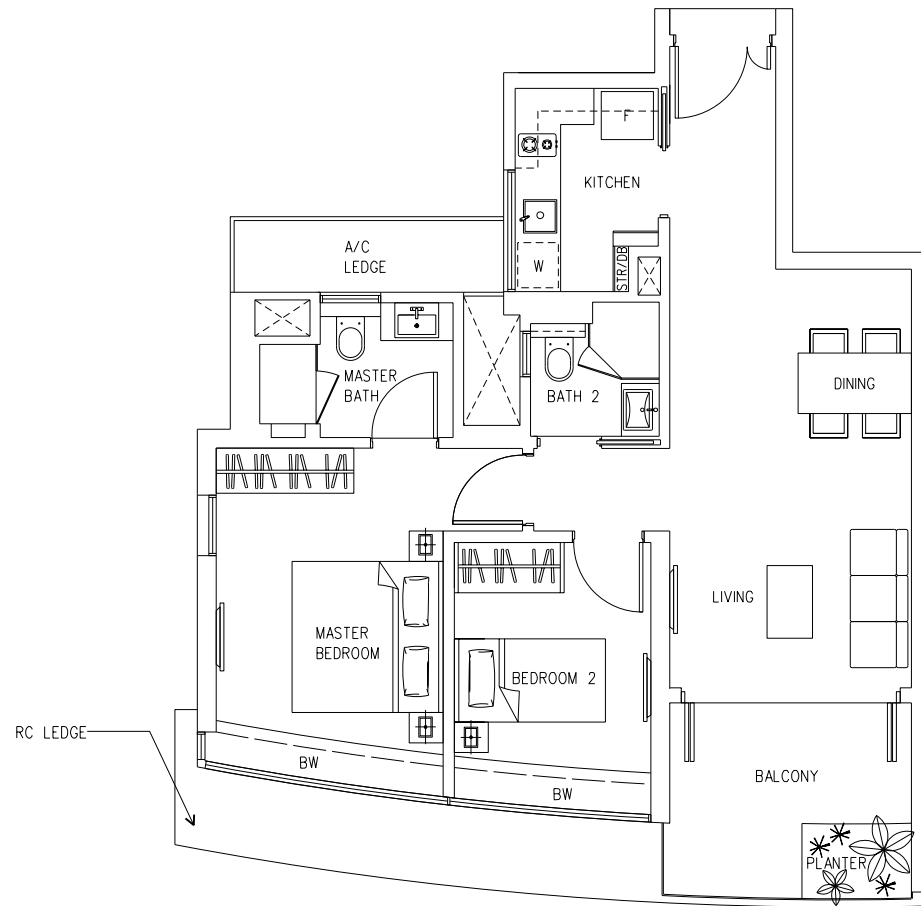
- 1-Bedroom + Study/ Bedroom
- 2-Bedroom
- 3-Bedroom
- 4-Bedroom
- Penthouse



TYPE A
1-Bedroom + Study (bedroom)
64 sq m / 689 sq ft
#04-04 to #34-04

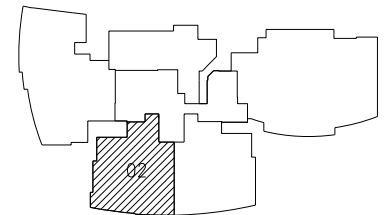
Plans and areas are subject to change without prior notice.

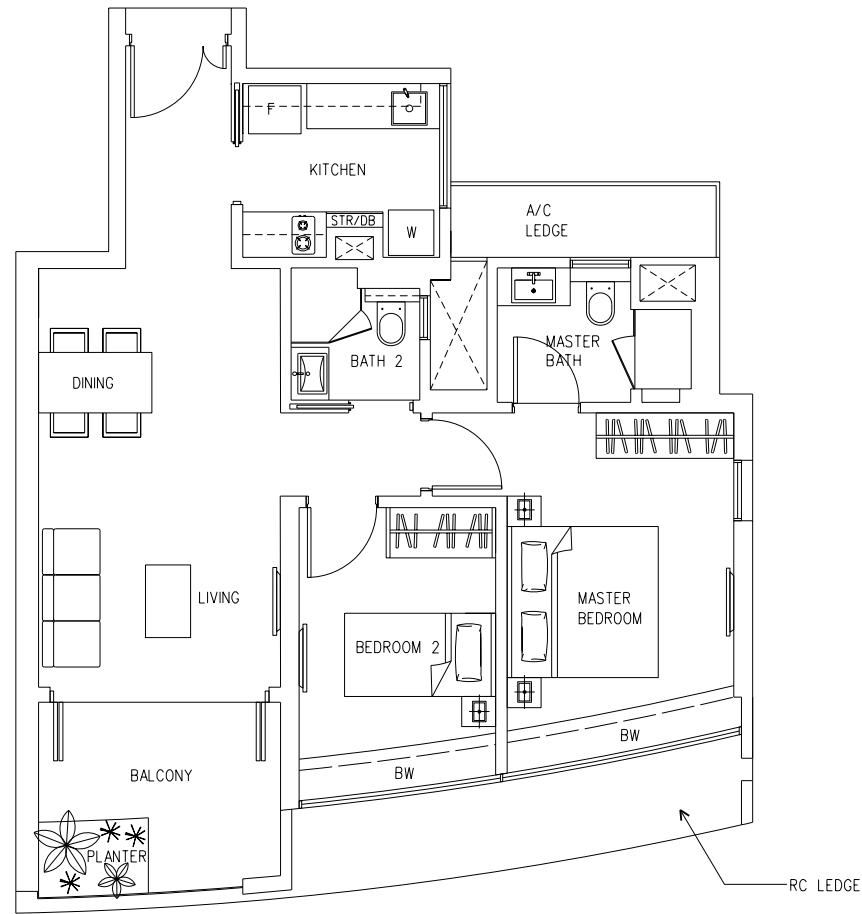




TYPE B1
2-Bedroom
81 sq m / 872 sq ft
#04-02 to #34-02

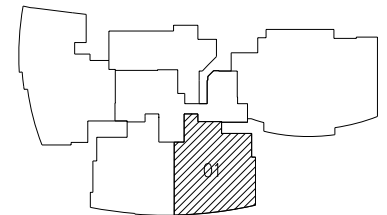
Plans and areas are subject to change without prior notice.



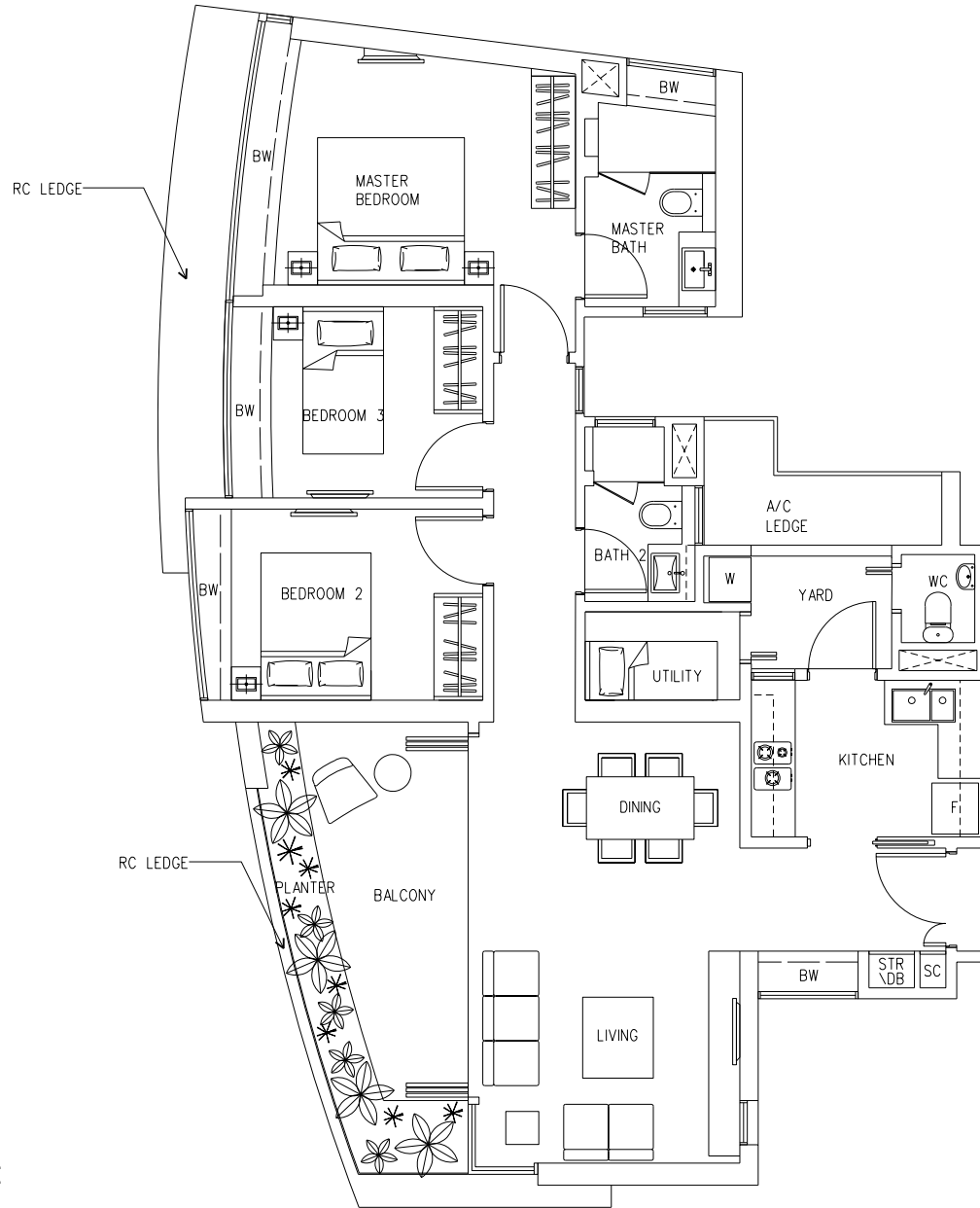


TYPE B2
2-Bedroom
82 sq m / 883 sq ft
#04-01 to #34-01

Plans and areas are subject to change without prior notice.

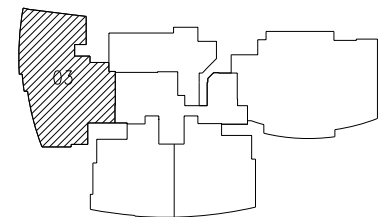


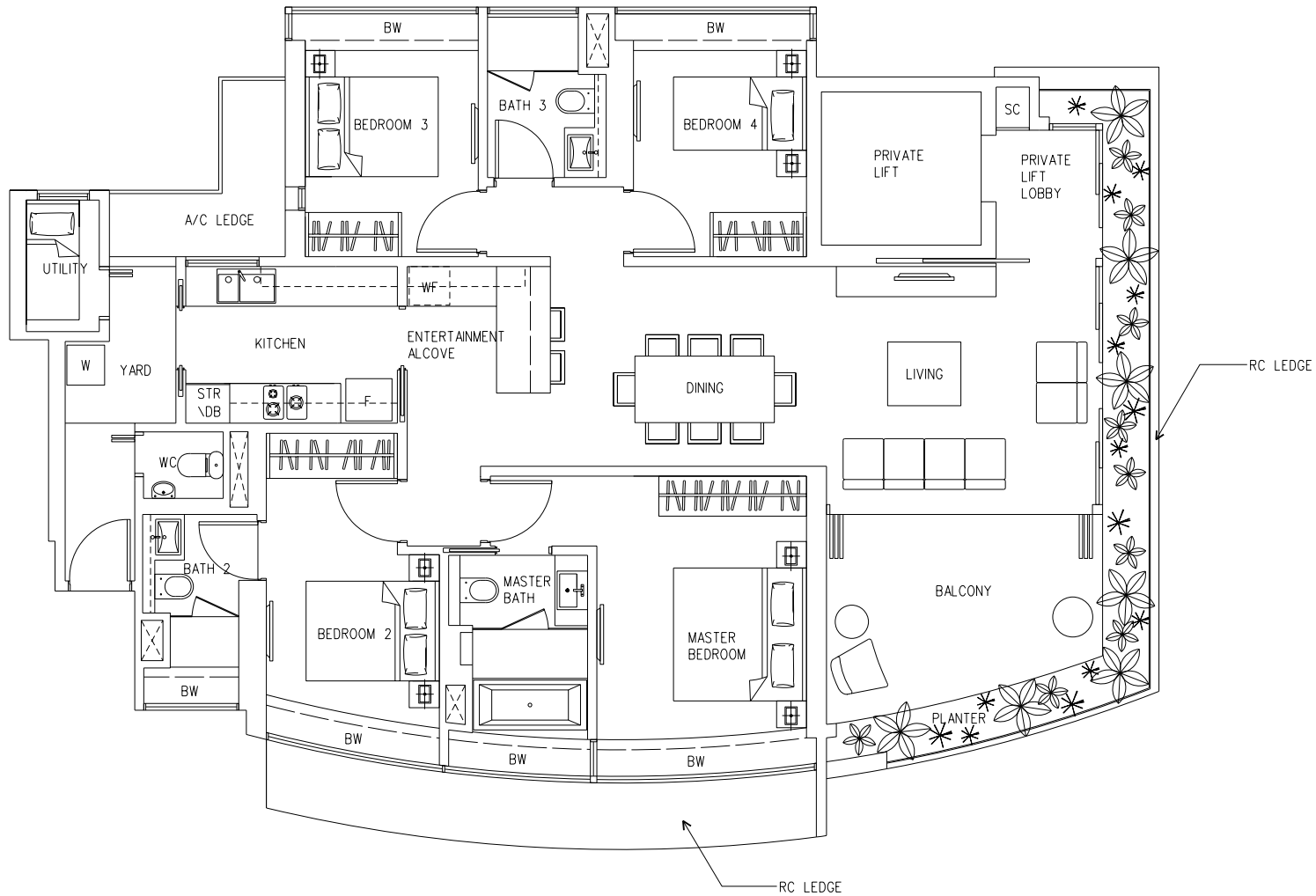
Floor plans as of 4 Jun 2010



TYPE C
3-Bedroom
121 sq m / 1,302 sq ft
#04-03 to #34-03

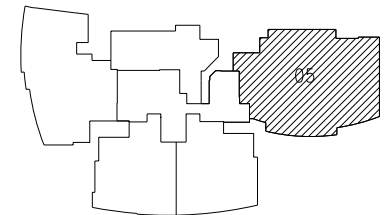
Plans and areas are subject to change without prior notice.

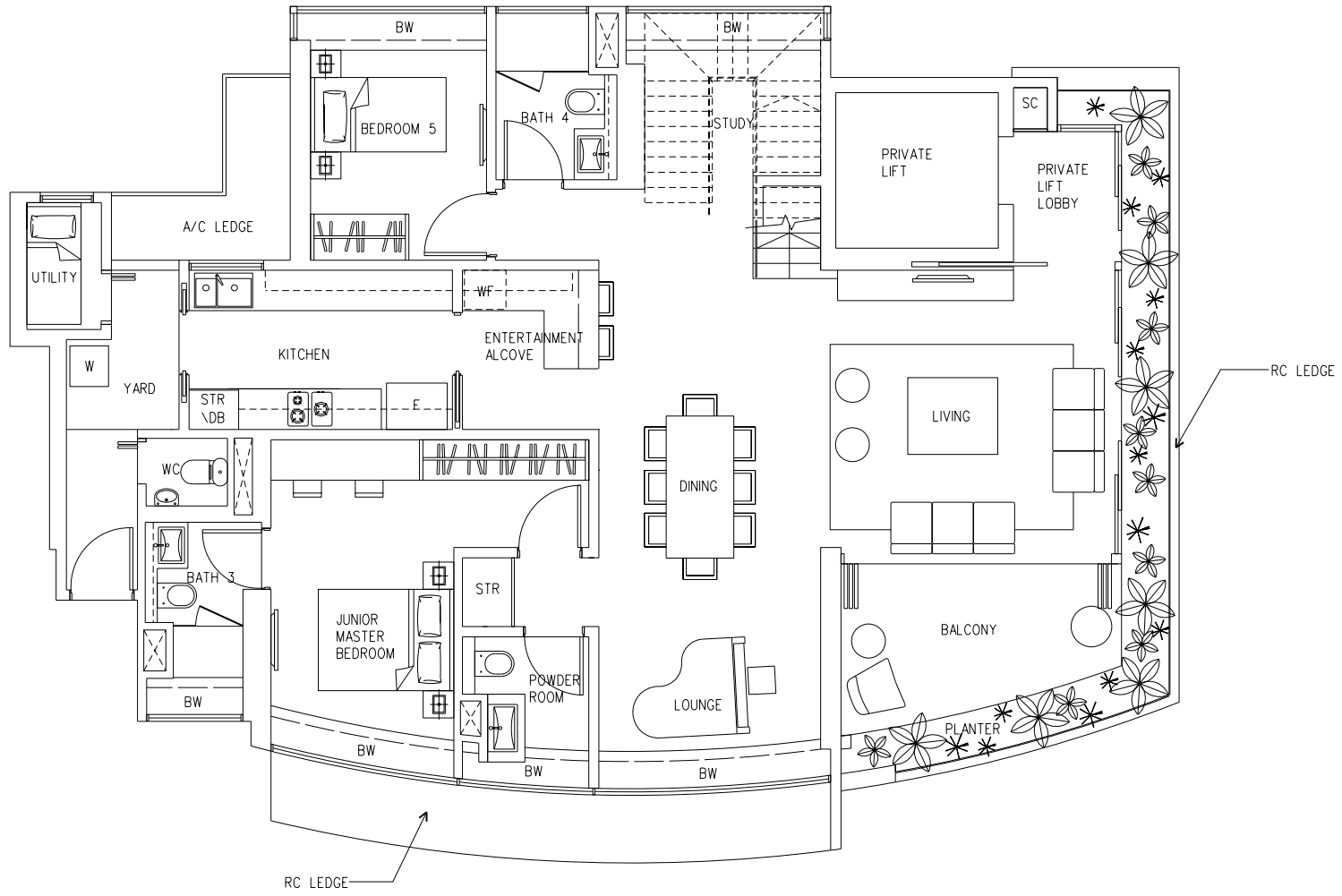




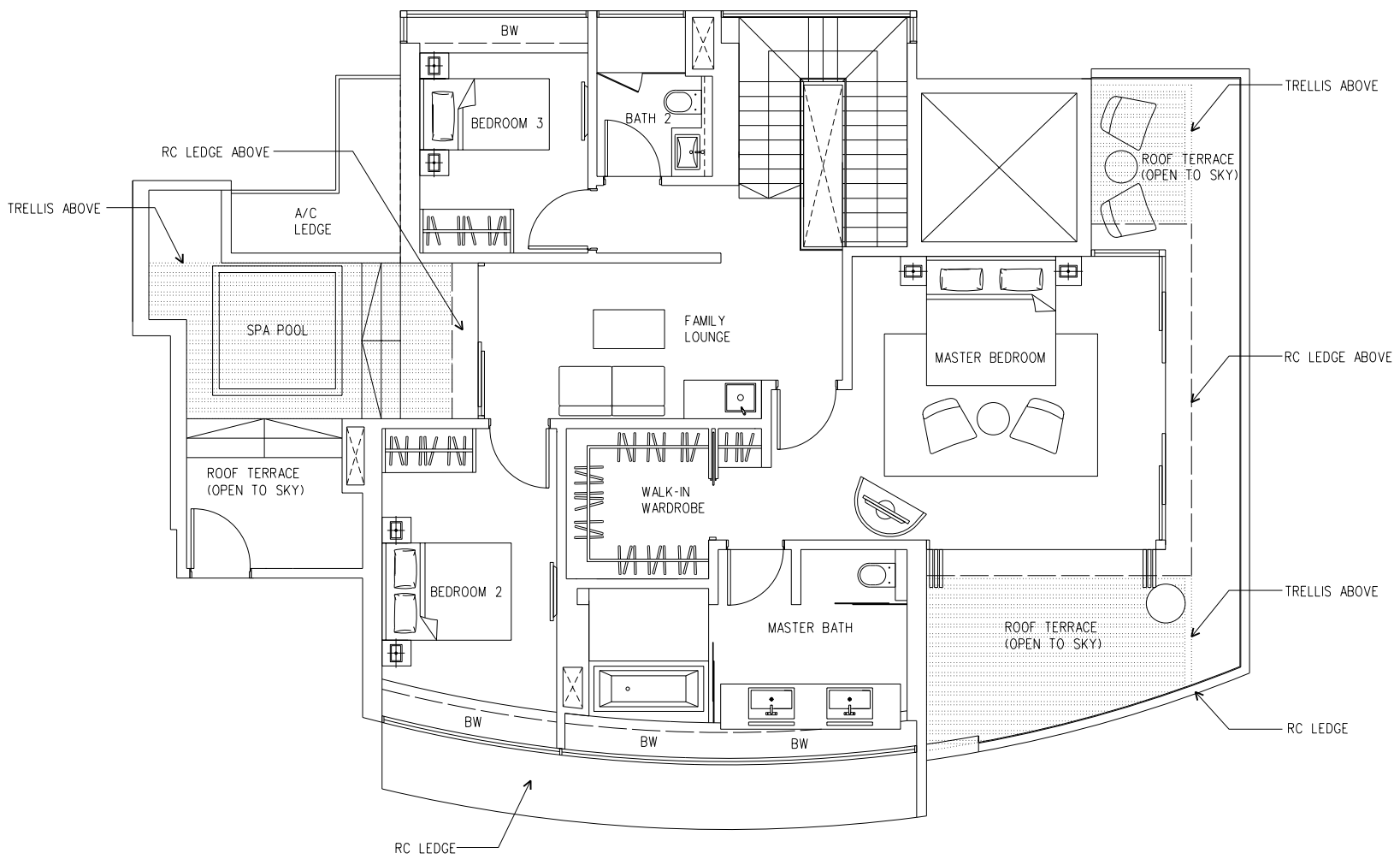
TYPE D
4-Bedroom
160 sq m/ 1,722 sq ft
#04-05 to #34-05

Plans and areas are subject to change without prior notice.



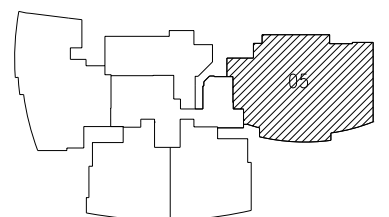
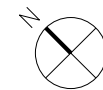


LOWER PENTHOUSE

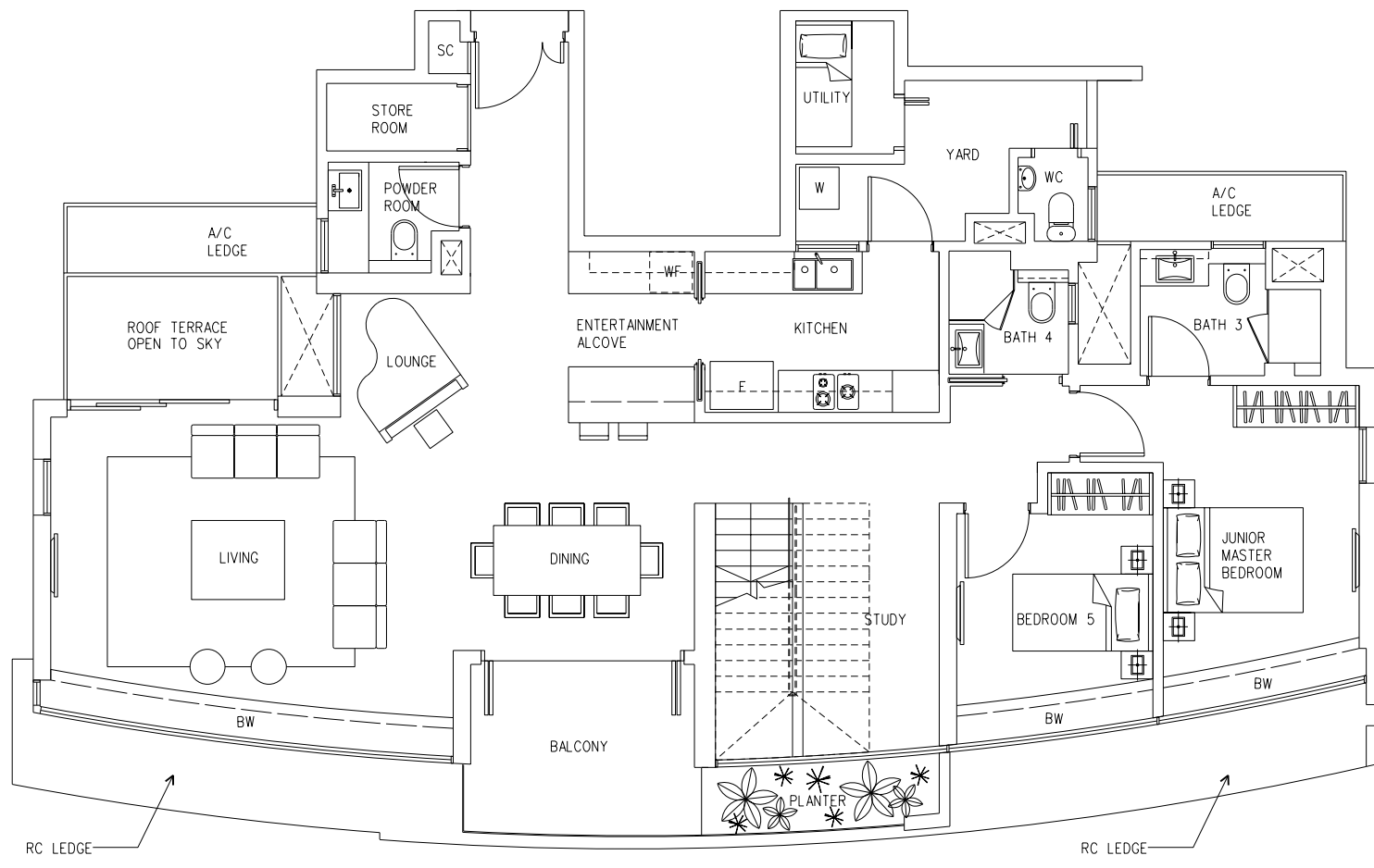


UPPER PENTHOUSE

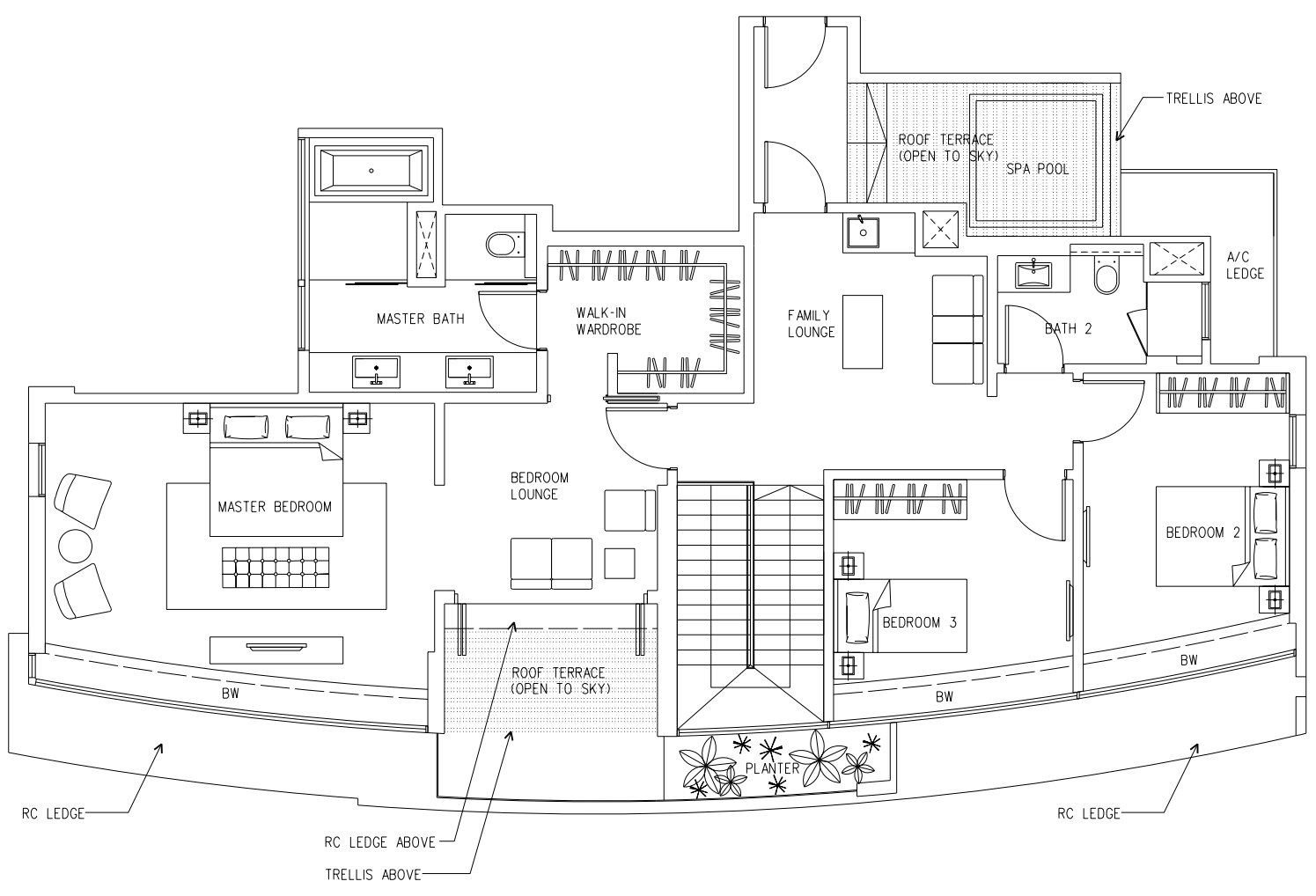
PENTHOUSE A
 315 sq m / 3,391 sq ft
 #35-05



Plans and areas are subject to change without prior notice.



LOWER PENTHOUSE



UPPER PENTHOUSE

PENTHOUSE B
315 sq m / 3,391 sq ft
#35-01

Plans and areas are subject to change without prior notice.

